



Tokomaru School Newsletter

Thursday 2nd April 2026



Principal's Pen

Kia ora koutou,

What a fantastic day we had at our Junior Cluster Athletics! A huge thank you to Matua Murray for organising the event, and to our wonderful teachers, visiting Cluster staff and principals, who worked together to ensure everything ran smoothly. Ngā mihi to our Kapa Haka roopu for their warm welcome, and to our senior students for their leadership in helping run the games. Thank you also to our supportive whānau for cheering on the sidelines - it made a big difference to our tamariki. Most importantly, congratulations to all our junior students for giving their best and having fun; we are incredibly proud of you all!

Over the holidays, our staff will be engaging in a couple of professional learning days. All staff will complete First Aid training so we can continue to ensure we have the most up-to-date training for the safety and wellbeing of our students and school community. We will also join Newbury and Turitea Schools for our second Ministry of Education Maths PLD, strengthening our teaching practice around curriculum changes, focusing on the Acceleration, Problem Solving and Algebra modules this time.

I wish everyone a safe and enjoyable two-week Easter and end of term break - we all look forward to seeing you refreshed and ready for Term 2!

Mel Ryan,
Principal.



Term One Dates

Thursday 2nd April - Last day of Term 1
Good Friday - Friday 3rd April
Easter Monday - Monday 6th April
Easter Tuesday - Tuesday 7th April
Monday 20th April - First day of term 2



Upcoming Dates

Monday 20th April

- First Day of Term 2

Tuesday 21st April

- Epic Music Lessons

Wednesday 22nd April

- Year 7&8 Technology at Monrad

Saturday 25th April

- ANZAC Day March from school

Monday 27th April

- ANZAC Day (observed) - School Closed

Tuesday 28th April

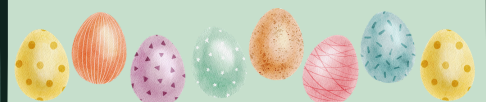
- Epic Music Lessons
- Term 3 Out of Zone Ballot applications open

Wednesday 29th April

- Year 7&8 Technology at Monrad

Friday 1st May

- Rangamarie Marae visit for Kapa Haka & Year 7&8's



Sports

That's a wrap for sports in Term 1! What an incredible term it has been, with so many of our tamariki getting involved, trying new sports, and showing fantastic teamwork, effort, and sportsmanship across a range of events. It has been awesome to see the enthusiasm and pride our students bring when representing our school.

A special well done to our girls who participated in the Futsal (soccer) tournament. You showed great determination, resilience, and teamwork throughout the day—ka mau te wehi!

We would also like to extend a huge thank you to our parents and whānau who supported our hockey and netball teams this term. Whether you were coaching, managing, transporting, or cheering from the sidelines, your support is invaluable. We simply could not run our sports programmes without you, and we truly appreciate the time and effort you give to our tamariki.

Looking ahead to Term 2, we have winter hockey and basketball coming up. These are always popular sports, and we are excited to see many students get involved again. Please ensure permission slips are returned as soon as possible so we can begin organising teams.

Thank you again for a fantastic Term 1 of sport – we can't wait to see what Term 2 brings!

Miss T & Matua Murray



Fuel Response Plan Update

As you may be aware, the Government has released a Fuel Response Plan aligned with the National Fuel Plan. This outlines different response phases to help manage the impact of any fuel supply disruptions across New Zealand.

At present, New Zealand is operating under Phase 1, which means schools remain open and operating as normal.

We understand that rising fuel costs or potential disruptions may create challenges for some families. As a school community, we are committed to working together to ensure all students can continue attending and learning.

Supporting our students together at Phase 1:

- Our school bus service is continuing to operate as normal
- Consider carpooling with other families where possible
- Encourage walking or biking for students who live nearby
- Contact the school if transport is becoming a barrier - we may be able to help connect families
- Free breakfast and lunch are available for all students each day

By working together, we can ensure every student remains connected to their learning and school community.

For more information on the Fuel Response Plan, please visit the Beehive website: <https://www.beehive.govt.nz/>

Last Summer
hockey game for
our teams - well
done to all our
students,
supporters, and
helpers!



ERO Survey

ERO's research centre wants to hear from parents and whānau about their child's school's assessment and reporting practices, as part of a national project. Here is the link to a 10-minute survey: https://www.research.net/r/Assessment_Parent_Survey

The link gives information about the project and consent before the survey starts, and responses are completely anonymous. We've kept them short and simple - we know you're busy.

ERO are collecting responses until the end of the school term - Thursday 2 April.

Board of Trustees

This term some of the policies in the Safety On and Off School Grounds were open for review. The review will close on Thursday 2nd April.

Key policies:

- Alcohol, Drugs, and Other Harmful Substances Policy (board)
- Sun Protection (board)
- Digital Technology and Online Safety (board)
- Cellphones and Other Personal Digital Devices
- Firearms (optional policy)

To review:

-go to schooldocs.co.nz

-Username: tokomaru

-Password: excellence



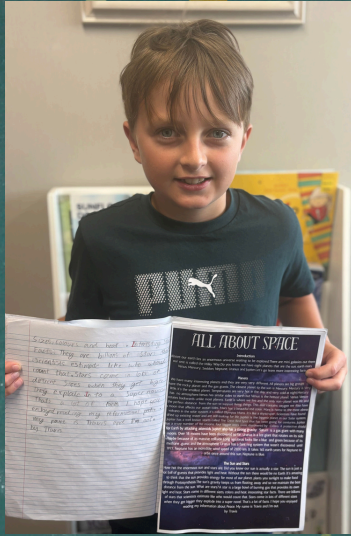
SchoolDocs
Policies and Procedures

GIRLS FUTSAL

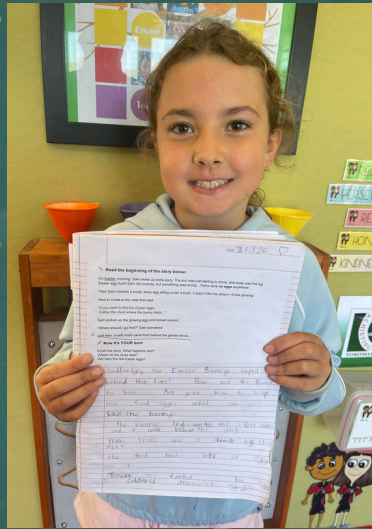


Student Stars

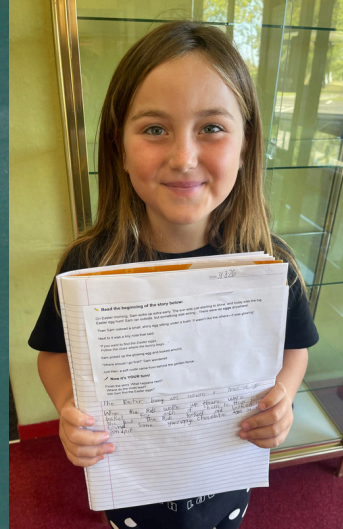
Te Tutuki i te kairanga



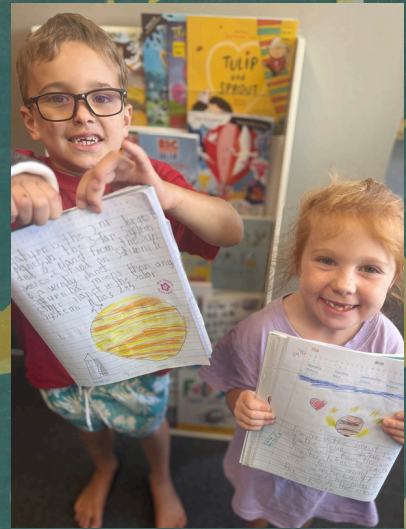
Travis' super writing about space!



Addy F's Easter writing!



Addy P's Easter writing!



Vinnie and Ruby shooting for the moon with their writing about Space!

2026 Leaders!

Student Leadership Team 2026



Council: Harper



Council: Ali



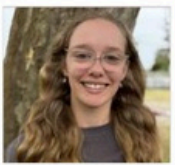
Council: Bonnie



Head: Liam



Head: Ruby



Deputy: Jessica



Deputy: Jadzia



Council: Molly



Council: Max



Council: Emily

CULTURAL LEADERS



PIPI & RUBY

House Leaders 2026

OTAKI Titans

Join Our Swimming Whānau


MAKE A SPLASH WITH THE OTAKI TITANS

A fun, friendly swim club for kids aged 7+
From learn-to-swim to competitive squads



WHY JOIN?	WHERE WE SWIM	SWIM GROUPS
<ul style="list-style-type: none"> ✓ Build Water confidence ✓ Focus on technique and performance ✓ Experienced, award-winning Head Coach ✓ Supportive, qualified Junior coaches ✓ Pathway from beginner to competitive swimmer ✓ Get fit and active ✓ Fun, team-focused whānau culture 	<ul style="list-style-type: none"> 📍 Otaki Pool - Mill Road, Otaki 📍 Coastlands Aquatic Centre - Paraparaumu 	<ul style="list-style-type: none"> ✓ Learn to Swim ✓ Junior Squads ✓ Senior Competitive Squad ✓ Para Squad ✓ All abilities welcome

JOIN NOW!
✉ otakitsc@gmail.com
🌐 www.sporty.co.nz/otakitsc
📘 Facebook: Otaki Titans Swimming Club

True or False... The 100 folds in a chef's hat stand for 100 ways to cook an egg. 

Take part in the Lil' Explorers Trail this school holidays!

- By completing the trail, your little explorer is in to win an Overnight Nature Experience valued at \$295!
- Lil' Explorers Trail is free with admission to Ngā Manu.
- Open daily 10am - 5pm

ngamanu.org.nz

74 Ngā Manu Reserve Road
Waikanae



Tokomaru ECC

www.tokomaru-ecc.co.nz | (06) 329 8730 | info@tokomaru-ecc.co.nz

Tokomaru RSA and Country Club

ENROLMENTS OPEN NOW!   

Start Your Musical Journey with EPIC!

Learn Drums, Keyboard & Guitar!

Does your child want to:

- learn an instrument,
- play in a band,
- & perform on the big stage?


SIGN UP TODAY!



EPIC! MUSIC ACADEMY


Ask the school office for a sign up form!
Or send us an email: schools@epicma.co.nz

Thanks to our supporters!



the **tank GUY**

BEST QUALITY | BEST VALUE | BEST ADVICE



Everything Nathan Mooney touches turns to **SOLD**
Call for **Mooney Magic** today!

Nathan Mooney
RE/MAX Real Estate



Crest Clean

READY TO CLEAN



Delivering Excellence
Leaders in sustainable cleaning



SHANNON BULK
SBH
HAULAGE

SHANNON BULK HAULAGE

QUARRY ROCK • FERTILISER SPREADING & CARTAGE • DIGGER WORK



Professionals

Unique Realty Ltd

SANDRA VAN TOOR

PROFESSIONAL SALES PERSON OF THE YEAR

4 SQUARE

SHANNON



GUTHRIE Aawork



LEE BUILDERS

COMMERCIAL • MAINTENANCE • DECORATING





Henry's Plumbing Ltd

For all your plumbing needs | 027 276 2121





JASE SCAFFOLDING

platform • mobile • edge protection






JDM EARTHMOVING

Excavation, Demolition and Civil

0275003011



Tokomaru School Staff



Shayla Treleaven
(Miss T)
Deputy Principal & Room 4
Teacher
streleaven@tokomaru.school.nz



Mel Ryan
Principal
principal@tokomaru.school.nz
06 329 8780



Roxanne Eastham
Office Manager
officemanager@tokomaru.school.nz
06 329 8780



Renee Cameron
Room 1 Teacher
rcameron@tokomaru.school.nz



Torah Toney
(Whaea Torah)
Room 2 Teacher
ttoney@tokomaru.school.nz



Samantha Sarten
Room 3 Teacher
ssarten@tokomaru.school.nz



Murray Te Huki
(Matua Murray)
Room 5 Teacher
mtehuki@tokomaru.school.nz



Katrina Lawton
Librarian
Teacher Aide



Hayley Westrupp
Teacher Aide



Damian Groves
Caretaker

Home & School

Chairperson: Narissa Cosgrove
Secretary: Karen Lister
Treasurer: Roxanne Eastham
School Reps: Mel Ryan & Torah Toney
Grants Officer: Adele Coles
Parent Reps: Chante Lennon, Kylie
Winiata, Kelly McDermott.

Bank Account Info

Tokomaru School
(Board Account)
12-3143-0428358-00

Tokomaru School
(Home & School Account)
12-3143-0428358-01

Board of Trustees

Presiding Member: Dave Lawton
Principal: Mel Ryan
Secretary: Rachel Wilson
Minute Secretary: Roxanne Eastham
Staff Representative & Treasurer:
Roxanne Eastham
Parent Representative: Haley Dell

